

GlobalLogic scaleQA

Test Execution & Monitoring
Infrastructure on the Go

Infrastructure modules to effectively set up, execute, scale, and monitor quality engineering for your

Technology

Supported Platforms:

Platform agnostic

Relevant Industries:

Industry agnostic

Technologies:

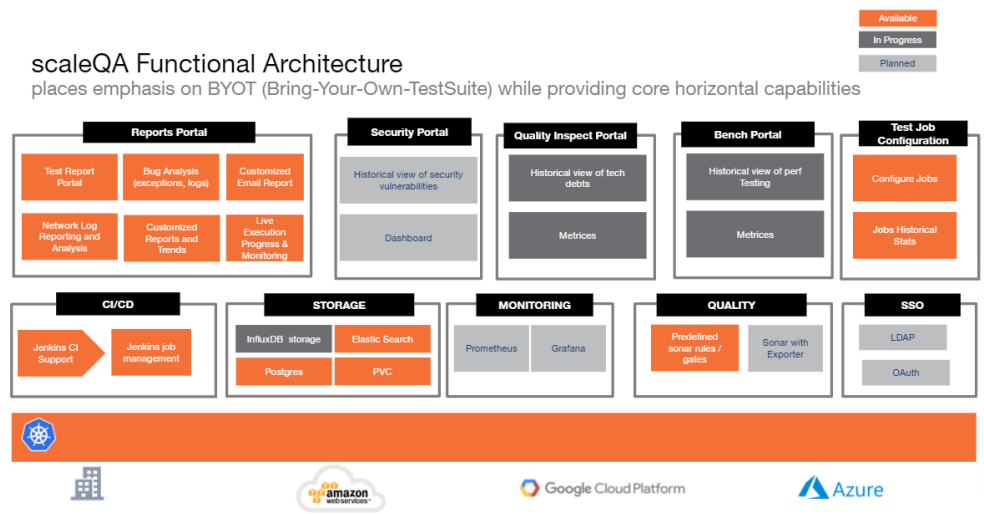
- Ansible
- Kubernetes
- Kubespray
- Selenoid
- InfluxDB
- PostgreSQL
- Elasticsearch
- Grafana
- JMeter
- Jenkins

Developing modern enterprise software is all about agility and speed — it requires effective mechanisms to test, monitor and continuously improve the quality of the product. Challenges in the latter mean that most project teams either have to shoehorn quality and testing at later stages or bring in either expensive (and potentially sub-optimal) quality engineering infrastructure.

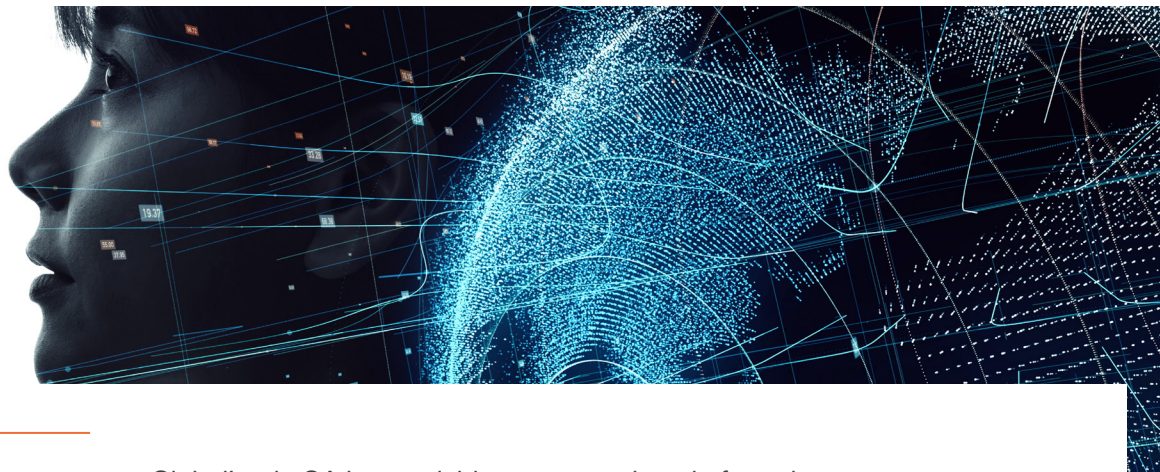
scaleQA provides test execution & monitoring infrastructure on the go, for “Quality Assurance as a Platform”. Bring your test suite and leverage the infrastructure out of the box. Take advantage of a 360° view of software quality, with full insight into aspects ranging from functional feature readiness, static code analysis, performance security vulnerabilities, and more.

scaleQA Functional Architecture

places emphasis on BYOT (Bring-Your-Own-TestSuite) while providing core horizontal capabilities



GlobalLogic ScaleQA



Platform and industry agnostic; quick to set up with a highly scalable and cloud native

GlobalLogic QA is a scalable test execution platform that:

- Is built on top of production-ready kubernetes cluster, providing a strong foundation to scale.
- Prevents Vendor Lock-in as it seamlessly integrates with all the three major cloud providers (AWS, Azure and GCP).
- Provides a single environment for a parallel launch of automated tests.
- Can scale jenkins preconfigured.

Key Benefits

- Quick setup, with a highly scalable and cloud native QA platform.
- Full historical view of tests run.
- Prem and Multi cloud solution that works on all three major cloud providers.
- Out of the box Production ready Sonar setup with predefined cross-platform rules selected from successful engagements.
- A ready-to-use platform to run your jmeter performance tests in a cloud native and scalable fashion.
- Up to 50% reduction in overall regression test time.
- Up to 40% reduction in overall smoke/BVT testing time.
- End-to-end infrastructure for quality engineering, out of the box.
- Automatically scale your test infrastructure up and down based on needs and runs (capex to opex).
- Multiple product lifecycle view of QA.
- Integrates well with most automation solutions.
- Supports test automation frameworks with parallel execution capabilities

Technical Information

- Isolated environment: Selenoid allows running each browser in a separate container, which enables full isolation of the browser environment.
- Runtime environment for test automation (regression/smoke) suites such as Selenium, with predefined stable browser images.
- Simultaneous support of multiple browser versions (with Selenoid only at present time).
- Live video enables remote visibility of test execution. Live browser screen and logs; new, rich user interface showing browser screen and Selenium session logs.
- Resources consumption and utilization: Selenoid enables to maintain a high load without additional waste of resources and in addition, all inactive containers are removed at the end of each session. The level of free memory is always appropriate.
- Video recording: Any browser session can be saved to video with API to list, download, and delete files.
- Lightweight and lightning fast: Consumes 10 times less memory than Java-based Selenium server under the same load; small 6 Mb binary with no external dependencies (no need to install Java).
- Full-featured test reporting dashboard with predefined widgets and trend charts.